

OTTUMWA, CALVARY &
OTTUMWA JEWISH
CEMETERIES

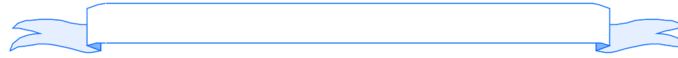
OFFICE HOURS:
11:30 AM TO 3:30 PM
MONDAY THROUGH FRIDAY

1302 N. COURT STREET
OTTUMWA, IOWA 52501

PHONE: 641-683-0687
FAX: 641-683-0686

EMAIL:
OTTCEMETERY@OTTUMWA.US

WEBSITE:
WWW.CITYOFOTTUMWA.ORG/
CEMETERY



**OTTUMWA CEMETERY
BOARD OF TRUSTEES**

John Hanolt

Terri Frimml

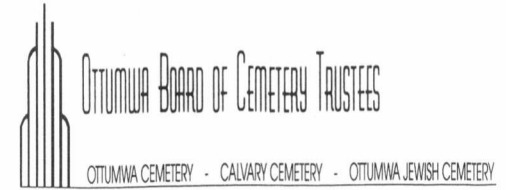
Robert Snell

William Hansen

Roger Hemmings

Connie Millard

James Carlson



**GRAVESITE
DECORATIONS
REGULATIONS**

GRAVESITE DECORATIONS REGULATIONS

OTTUMWA, CALVARY & OTTUMWA JEWISH CEMETERIES

The Trustees of the Cemetery Board encourages the use of floral tributes at the graves of your loved ones. The beauty and continuity of your cemetery depends on the cooperative efforts of all families who have loved ones entrusted in our care. Therefore everyone must adhere to some equitable regulations of grave decorations. THE FOLLOWING ARE SPECIFIC RULES COVERING THIS SUBJECT:

1. THE CEMETERY IS NOT RESPONSIBLE FOR MISSING ITEMS. The Cemetery promotes the use of floral tributes, however your Cemetery is a public area subject to many factors outside of our control and therefore the Cemetery will not be responsible for missing items.

2. BIENNIAL TOTAL CLEAN UP DAYS: MARCH 1 AND OCTOBER 1. A public notice is printed in the Ottumwa Courier on two consecutive weeks, as a reminder, before the biennial cleanup takes place. Floral tributes are encouraged to be placed for the next season, after APRIL 1 AND NOVEMBER 1.

3. CONFORMING ITEMS: Fresh cut flowers, fresh potted plants, artificial flowers or artificial potted plants are permitted in vases on or closely adjacent to monuments. Fresh cut flowers, fresh potted plants, will be removed by Cemetery personnel when they become unsightly. Shepherd hooks will be permitted with the following stipulations:

They must be next to the gravestone with the hook over the stone. (this is to prevent injury to the maintenance worker or damage to the machinery.) One hook per space, and no more than 2 per lot. To be conforming shepherd hooks will be a minimum of 48" from the top of the hook to the ground and a maximum of 60". No other metal designs will be permitted. Vigil lights will be permitted, one per grave not exceeding 2 per lot and must be placed near the headstone.

4. NON-CONFORMING ITEMS: Artificial decorations such as, but not limited to balloons, stuffed animals, Styrofoam pieces, windmills, glass containers, lawn ornaments, signs, sculptures, items made of glass, ceramic or concrete, cans, toys, or other unsightly objects, or objects that will break causing safety concerns or injury to maintenance personnel, or impede the ability to mow and trim the cemetery, will not be permitted, and will be removed by Cemetery Personnel without notice. See item #5 for exceptions to this item.

No hedges, fences, edging or enclosures of any kind will be permitted on or around lots. Mulching with wood chips, rock, landscape fabric or similar items is strictly prohibited.

5. HOLIDAY EXCEPTIONS: On Easter, Mother's Day, nationally observed Memorial Day and Father's Day, anything can be placed in the cemetery. However, non-conforming items (see #4) will be removed on the morning of the fifth day (not including Sunday) following the holiday.

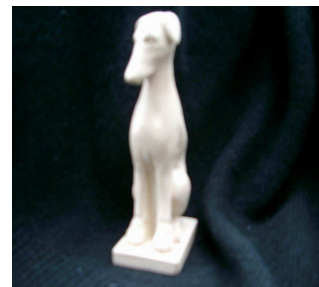
6. PLANTINGS BY PERMISSION ONLY: The cemetery treasures your living tributes and the benefits they bring to the cemetery. However, we must maintain the cemetery for all, which means, sometimes a certain type of plant or a certain location will not be permitted. Also, certain sections have rules and formats which

must come first in making these decisions. A. Tulips, daffodils, hostas and peonies are permitted. B. ROSES ARE NOT PERMITTED. C. Shrubs, evergreens and trees are permitted, but only with permission and the guidance of cemetery management, as to type of plant and its location. D. PLANTINGS ON GRASS LEVEL MARKERS ARE NOT PERMITTED.

When planting, it is the responsibility of the person planting to maintain the bed weed-free. If the planting becomes unsightly with weeds and grass, the bed will be trimmed off.

Although Cemetery Personnel try very hard not to, sometimes the mowing and/or trimming will cut a plant off. In most cases, the plant will grow back. However, the Cemetery cannot be held responsible if this type of accident occurs. From time to time, the Cemetery uses chemicals to control weeds, but if this should damage a planting, the Cemetery cannot be held responsible.

7. COLUMBARIUM AREA: No temporary attachments such as tape, wire, string or stickers are allowed. Decorations may be placed in a specified area near the columbarium at the time of inurnment. These items will be removed by cemetery personnel one week after inurnment. No other decorations will be allowed in the columbarium area. All flowers and tributes placed in the columbarium area will be removed by cemetery personnel without notice.



If you have any questions, please check with the office.